



TES[®]

246 VERSUS

Contents

04

Dealers

08

Tes Versus

12

Quality & Comfort

14

Boat colours

16

Interior design

18

Kitchen variations

19

Kitchen additions

20

Fridge variations

21

Electric dashboard
panels

22

Audio

23

Contact



◆ Dealers



TES Yachten

Deutschland, Österreich & Schweiz

Schatzlgasse 28 82335 Berg

+49 (0) 17630623350

sailing@tes-yachten.de



SUNGWOO SHIPPING CO.,LTD. (Old Name : Marine21)

#721, 312, Suyeong-ro, Nam-gu,

Busan, Korea

+82-51-465-9647

oldsalt@naver.com



Tes Yacht Italy Northeast Vialtaia

Cesare Battisti 138

Lonigo (VI) 36045

+39 3494594402 +39 0444 835664

northeast@alice.it



Tes Yacht Turkey Gozdem

Marin Mimar Sinan Mahallesi, Üsküdar
Caddesi

YEDPA Ticaret Merkezi H2 Caddesi P2
No:99 Ataşehir İSTANBUL, TÜRKİYE 34779

0216-4559824 0538-771109

pelindemirayak@gozdem-marin.com



Tes Yacht Canada

30 Sai Crescent

Ottawa, Canada

+6 135 237 857 +6 137 994 982

info@tes-yacht.ca



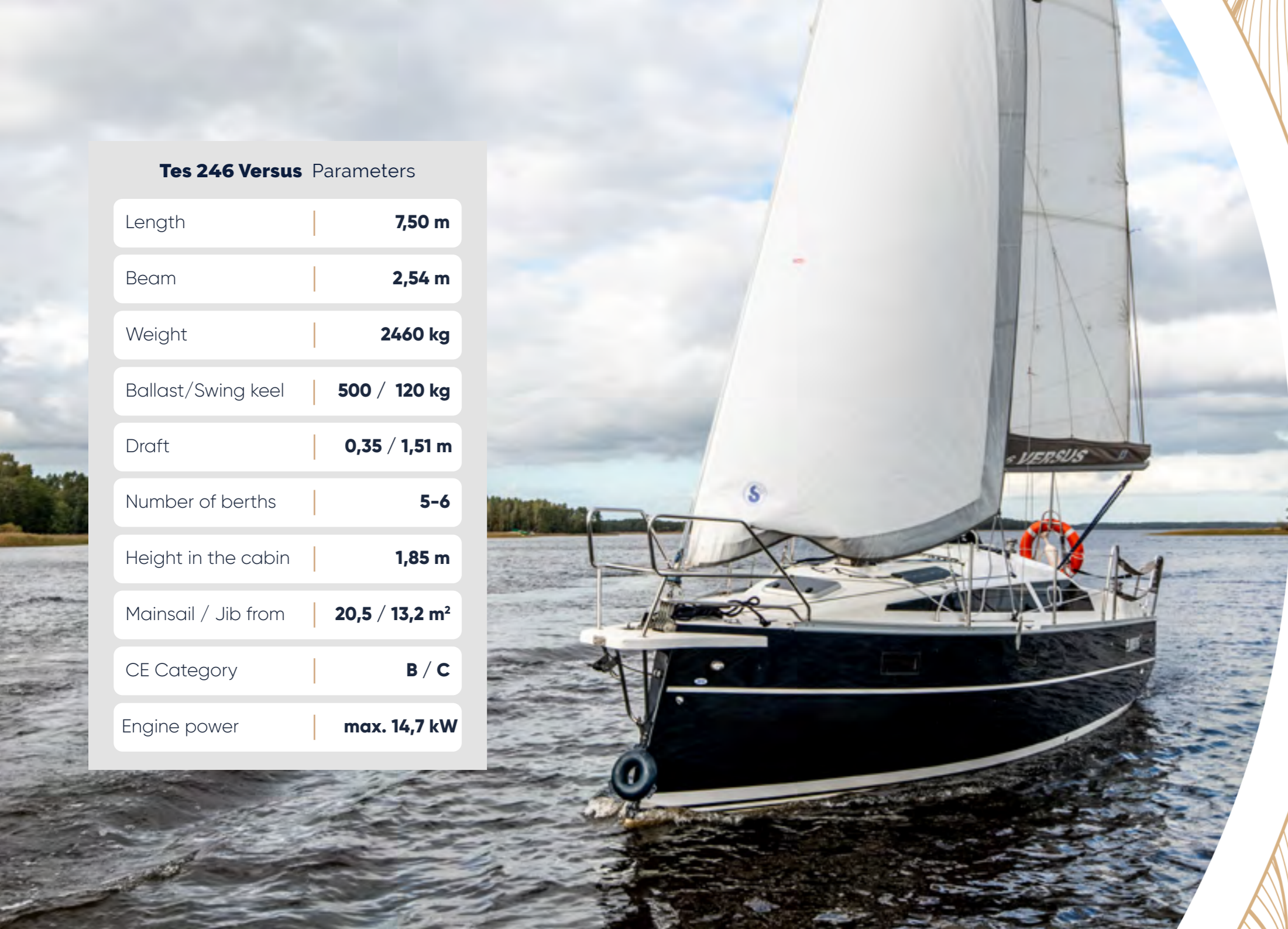
U.S.Yachts & Customs, Inc.

092-513-2530

sail@usyachts.co.jp







◆ Tes 246 Versus



[WATCH VIDEO ABOUT](#)

Tes 246 Versus Parameters

Length	7,50 m
Beam	2,54 m
Weight	2460 kg
Ballast/Swing keel	500 / 120 kg
Draft	0,35 / 1,51 m
Number of berths	5-6
Height in the cabin	1,85 m
Mainsail / Jib from	20,5 / 13,2 m ²
CE Category	B / C
Engine power	max. 14,7 kW

“Better to belong to some than to all.” A. Sapkowski

Versus defies mediocrity – it is unique, original. Beautiful, eye-catching design goes hand in hand with excellent nautical parameters. Thanks to its construction and special emphasis on safety aspects, the yacht is the perfect sailing cruiser for the family. It is perfect for sailing on the lake and at sea, even in difficult weather conditions.

Thanks to the ergonomic solutions in the open-plan cabin design, it provides each cruise participant with space for themselves. We made sure that it was not only safe and dynamic, but also easy to drive.

Versus is a yacht that you will recognize from afar for its modern silhouette, with an inverted stem and a tasteful, slender shape.

The most important features of the yacht:

- Perfect for transport – the width of the hull of 2.49 meters allows it to be easily transported throughout Europe without special permits
- safe
- easy to sail even by one person
- excellent nautical parameters
- Inverted stem provides excellent stability
- excellent visibility from the cockpit
- spacious sanitary cabin with toilet and shower
- ergonomic kitchen
- luxurious finished spacious interior
- comfortable full-size berths
- excellent living conditions for the crew
- plenty of storage space
- CE category B or C

Swing keel



False keel



Fixed keel



2-4 in owner version



4-6 in charter version



◆ Quality & Comfort

We are designing Tes yachts with **customers comfort** and **convenience** in mind. That is why each of our units is already generously equipped in the standard version. We only use the **highest quality** materials.

The shipyard itself has been producing yachts in Drzewica continuously for **several decades**, and the company's headquarters is located in Gdynia – the sailing capital of Poland.

We take care of every detail of the boat, it's nautical parameters and tasteful finish. The decks of our units are finished with high-quality teak wood. The wood is processed in such a way as to make it resistant to the harmful effects of external factors, especially moisture and salt.

For development projects, we use unique construction ideas, based on ergonomics and a hedonistic desire to experience pleasure.

We constantly improve the **legendary** constructions and equip them with **the highest** quality yacht jewelry. We take care of every detail of the boat, its nautical parameters and tasteful finish.



◆ Possible hull and stripes colors

You have the option to personalize the hull and stripes color of your yacht by choosing from the entire RAL color palette. The RAL color system is a widely recognized color matching standard that includes a wide range of colors, allowing you to choose a shade that perfectly suits your preferences. From classic shades of white to bold and vibrant colors, the possibilities are endless.

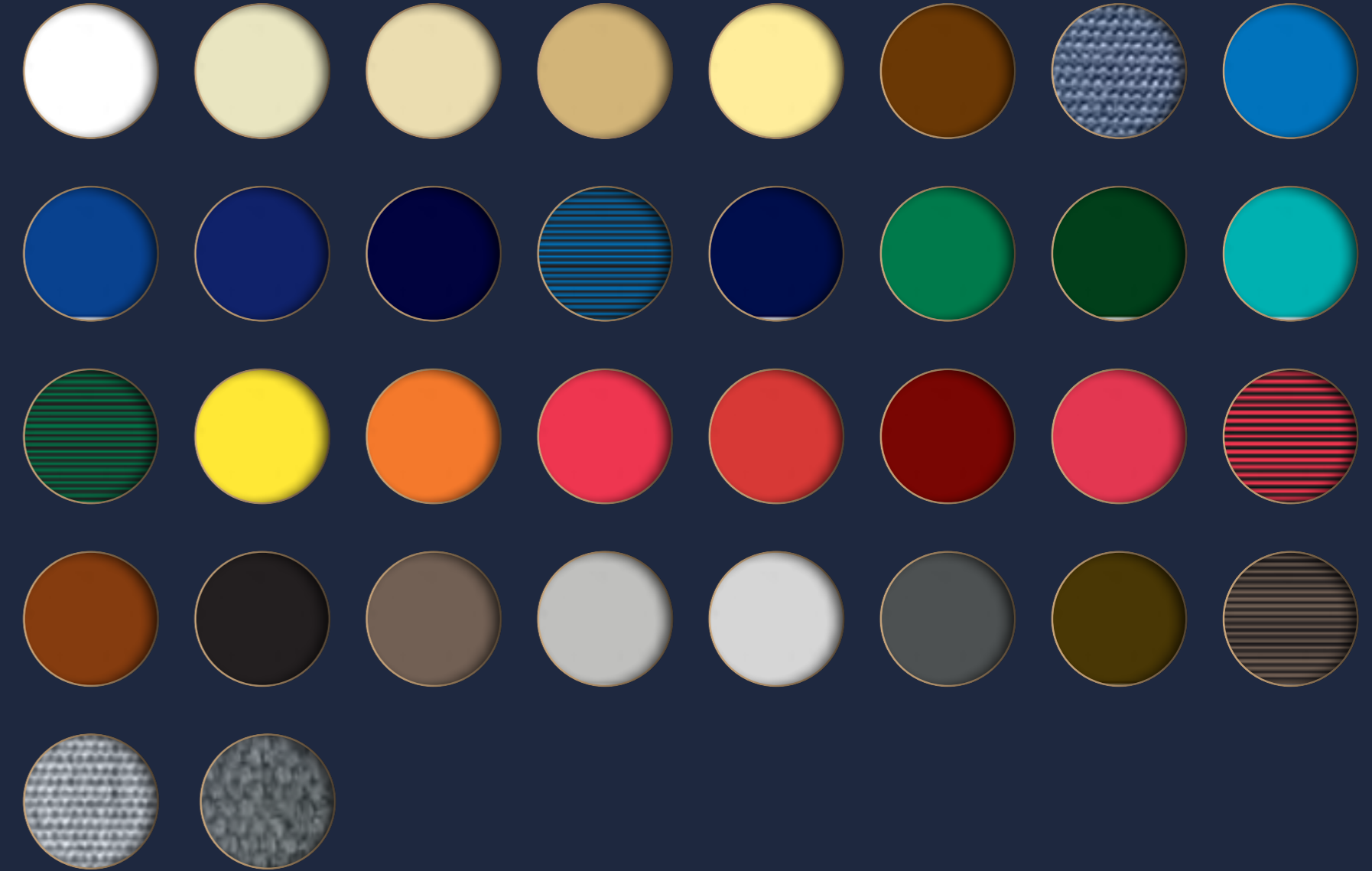
To choose your preferred color, simply provide the RAL color code to our team, and we will ensure that your yacht's hull is painted in the exact color you have chosen. Please note that the final appearance of the color may vary depending on the type of paint and finish used, as well as environmental factors such as lighting and weather conditions.

Choosing a unique hull color can make your yacht stand out and reflect your personal style, while also adding a touch of individuality to your vessel. If you have any questions about choosing a hull color or would like more information, our team is always available to assist you.



RAL palette

Sail material variations



Custom made interior design

Choose a contemporary, custom made interior design that makes spending time on a yacht a truly enjoyable experience.

On our vessels, you can choose interior finishes to bring the comforts of home to your yacht.

The interiors in our yachts are handmade. The furniture showcases an exceptional finish and is made from the finest woods. They stand out with contemporary style and stand the test of time. You can choose the type and color of fabric to suit your needs and the mattresses are measured and fitted with the highest precision.

TES sailing yachts are famous for the quality of the materials. In each of our models, we have ensured that just the right amount of light enters the interior of the yacht.

Create **your** yacht to **your** liking.

Internal wood variations



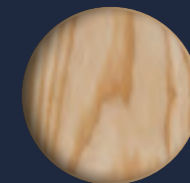
Oak



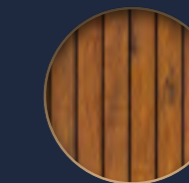
American walnut



Mahogany



Ash



Dark stripe floor



Light stripe floor

Materials to choose



◆ Kitchen variations

Every type of kitchen can be equipped with plenty of options:

- ◆ Top loaded compressor fridge
- ◆ Front opened compressor fridge
- ◆ Cooker under glass flap
- ◆ Cooker on cardan joints
- ◆ Oven with cooker on cardan joints
- ◆ We can make additional drawers
- ◆ Outboard water instalation to the kichen

And many, many more...



Standard variant

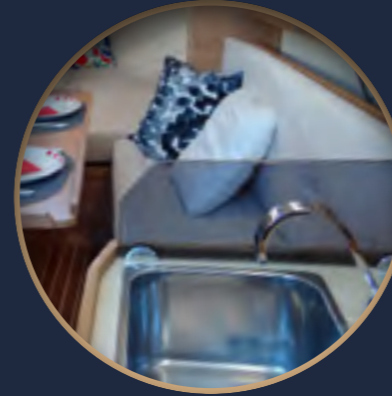


Medium variant

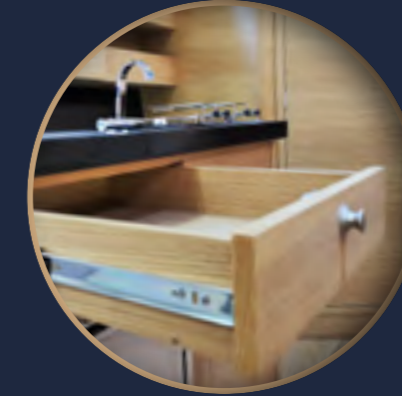


Large variant

◆ Kitchen additions



Plexi at a side of sink



Drawer for cuttlery



Cooker on cardan joints



Sink under the corian type countertop



Oven on cardan joints



Sample of cooker with glass flap

◆ Fridge variations

Depending on the type of kitchen furniture, we can install a front-loading fridge. If space permits, we can mount **40-60 liter** refrigerators. By default, the refrigerator is always powered by a **12V battery**.

We are also installing **ventilation grilles** on the countertop and under the fridge, and with the option of a large kitchen, we can install a mounting frame - the fridge is one line with the cabinets.



Dometic CRP40



Elegance
40l - 70l



Vitrifrigo c50i



◆ Electric dashboard panels

Depending on the number of electrical devices and indicators, we can use different layouts of buttons and indicators. The pictures above are just an example. The standard equipment includes a BEP panel with 6 buttons + WEMA indicators and sensors



Standard BEP panels with WEMA gauges.



BEP board on engraved PLEXI (With unit name + holes for indicators)



Amperflex Premium glass dashboard with micro monitor display



Amperflex Premium glass dashboard with micromonitor display, hydromagnetic fuses and boat engraving.

◆ Audio

The audio system we offer may consist of a radio, two speakers in the mess room and/or two speakers in the cockpit. On request, we can expand the audio system with an additional subwoofer or speakers in the bow, in the stern berth or in the bathroom. With the radio, we are mounting an internal FM antenna, or a mast antenna on request. All radios we offer support MP3 format and wireless Bluetooth communication.



Kenwood
MP3 / bluetooth radio



Clarion Marine
CMS4 radio



Fusion Marine
bluetooth radio



Pioneer
MP3 / bluetooth radio
with touch screen

◆ Contact



+48 534 260 450



biuro@tes-yacht.pl



www.tes-yacht.pl



TES YACHT



TES.YACHT



TES YACHT

